

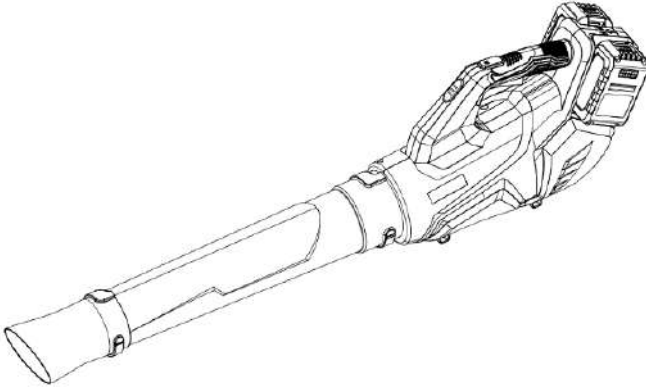
THANK YOU FOR CHOOSING YARDCORE



**YARDCORE®**  
**TOOLS BUILT FOR NATURE**

# INSTRUCTION MANUAL

## CORDLESS LEAF BLOWER



**40 VOLT LITHIUM ION 120 MPH**  
**TOOL MODEL NUMBER YC-LB40120**



Access product manuals instantly!

THIS TOOL IS AVAILABLE IN TWO BOX OPTIONS

YC-LB40120-2B	Includes: Leaf Blower Tool (YC-LB40120), 2 x 20V Batteries (YC-MSB-204), 1 x Dual Slot Charger (YC-DSC-12020)
YC-LB40120-NB	Leaf Blower Tool (YC-LB40120) ONLY Battery and charger sold separately

<b>SYMBOLS &amp; SAFETY ICONS</b>	<b>1</b>
<b>PRODUCT SAFETY</b>	<b>2</b>
<b>KNOW YOUR TOOL</b>	<b>3</b>
<b>ASSEMBLY &amp; SETUP</b>	<b>4</b>
<b>OPERATION (INCLUDING AIRFLOW &amp; NOZZLES)</b>	<b>6</b>
<b>BLOWER TUBE &amp; AIR INTAKE MAINTENANCE</b>	<b>7</b>
<b>MAINTENANCE SCHEDULE</b>	<b>9</b>
<b>TECHNICAL SPECIFICATION</b>	<b>10</b>
<b>BATTERY LEVEL INDICATOR</b>	<b>10</b>
<b>CHARGER STATUS INDICATOR</b>	<b>10</b>
<b>CHARGING TIME</b>	<b>10</b>
<b>BATTERY COMPATIBILITY</b>	<b>10</b>
<b>STORAGE</b>	<b>10</b>
<b>TROUBLESHOOTING</b>	<b>11</b>
<b>ENVIRONMENTAL NOTE</b>	<b>11</b>
<b>WARRANTY INFORMATION</b>	<b>12</b>
<b>CONTACT INFORMATION</b>	<b>12</b>
<b>MANUAL EN ESPAÑOL</b>	<b>13</b>

# SYMBOLS & SAFETY ICONS

Refer to this page for all safety labels and warnings used throughout the manual and on product labels.



## General Warning

Indicates a potential hazard. Follow all safety instructions before use.



## Read Operator's Manual

Read the manual thoroughly before operating the equipment.



## Rotating Blade Warning

Avoid contact with blades. Risk of serious injury.



## Wear Safety Footwear

Use safety boots to protect feet from debris and sharp objects.



## Wear Hearing Protection

Always wear ear protection to prevent hearing damage from loud noise.



## Wear Protective Clothing

Wear snug-fitting, full-body clothing to reduce injury risk.



## Wear Protective Gloves

Protect hands from cuts, abrasions, and contact with sharp tools.

call2recycle

## Recycle Yardcore Batteries

Do not discard batteries in the trash. When they reach end of life, recycle through Call2Recycle® at 1-800-822-8837 or visit call2recycle.org.



## Yardcore Sustainability

One tree planted for every tool, plus support for broader eco-friendly initiatives.



## Wear Safety Glasses

Shield eyes from flying debris and dust.



## Do Not Use in Rain or Wet Conditions

Not intended for use in wet conditions.



## Recyclable Material

This product or packaging is recyclable. Dispose of it according to local recycling regulations.



## Keep Hair Tied

Secure long hair to prevent it from being caught in moving parts.



## Blower Tube

Blower Tube Do not operate without tube in place.



## Thrown Object Hazard

Beware of flying debris. Ensure others are at a safe distance.



## Wear Safety Helmet

Always wear a protective helmet to avoid head injuries.



## Loose Clothing

Failure to keep loose clothing from being drawn into air intake vents could result in personal injury.



## Noise Level Rating

The machine emits 96 decibels of sound – wear hearing protection.



## Remove Battery Before Servicing

Always remove the battery before cleaning, transporting, or changing accessories.



## Battery Inside

This label indicates the package contains a lithium battery. Do not dispose of in fire, water, or household waste. Follow local recycling and transport regulations.



## Only Tool Inside

This label indicates the package includes the tool only. Battery and charger are not included and sold separately.



## Do Not Dispose in Household Waste

Dispose in accordance with local electronic/e-waste regulations.



## Do Not Burn

Do not burn the product or its parts. Risk of fire or explosion.



## Do Not Dispose in Waterways

Do not dispose of the product in rivers, lakes, or drains. Follow environmental regulations.

## PRODUCT SAFETY

**⚠ WARNING: Proposition 65 (California Only)**  
 This product can expose you to chemicals including lead and Di(2-ethylhexyl) phthalate (DEHP), which are known to the State of California to cause cancer and birth defects or other reproductive harm.  
 For more information, visit [www.P65Warnings.ca.gov](http://www.P65Warnings.ca.gov).

### IMPORTANT SAFETY INSTRUCTIONS

#### ⚠ WARNING:

Read all safety warnings and instructions before use. Failure to follow warnings and instructions may result in electric shock, fire, or serious injury.

#### ⚠ WARNING: READ ALL INSTRUCTIONS

### FOR ALL YARDCORE TOOLS

1. Avoid Dangerous Environments – Do not use the tool in damp or wet locations.
2. Do Not Use in Rain – This unit is not weatherproof.
3. Keep Children and Bystanders Away – Maintain a safe distance from the work area.
4. Dress Properly – Avoid loose clothing or jewelry that can become entangled in moving parts. Wear protective gloves, sturdy footwear, and secure your long hair.
5. Wear Eye and Face Protection – Use safety glasses or a face shield. Wear a dust mask if operating in dusty conditions.
6. Use Tool as Intended – Operate the Leaf Blower only for tasks it was designed for. Misuse may cause injury or damage.
7. Do Not Force the Tool – Operate at the designed speed for optimal performance and safety.
8. Maintain Proper Balance – Do not overreach. Keep firm footing and balance at all times.
9. Stay Alert – Operate the tool with full awareness. Do not use it when tired or under the influence of substances.
10. Store Safely – When not in use, store the tool indoors in a dry, secure location away from children.
11. Maintain the Tool with Care – Keep the cutting head sharp and clean. Follow maintenance instructions for lubricating and replacing accessories.
12. Inspect Before Use – Always check for damaged guards, misalignment, or broken parts. If damaged, have the unit serviced by an authorized Yardcore service center.

### FOR BATTERY-POWERED YARDCORE EQUIPMENT

1. Prevent Accidental Starting – Ensure the power switch is OFF before connecting the battery or moving the unit.
2. Disconnect Battery Before Maintenance – Remove the battery before changing accessories, cleaning, or storage.
3. Use the Correct Charger – Charge only with Yardcore approved chargers. Using the wrong charger can pose a fire risk.
4. Use Only Approved Batteries – Only use Yardcore 20V battery packs. Other batteries may cause injury or damage.
5. Avoid Short Circuits – Keep battery terminals away from metal objects such as keys, nails, or coins. Shorting may cause burns or a fire.
6. Handle Leaks Carefully – If battery fluid leaks, avoid contact. Rinse with water if exposed. Seek medical help if fluid contacts the eyes.
7. Do Not Use Damaged Batteries – Replace any battery that is cracked, punctured, or showing signs of damage.
8. Keep Away from Heat & Flames – Do not expose the battery to fire or temperatures above 130°C (265°F).
9. Charge Within Safe Temperatures – Only charge the battery within the temperature range listed in the manual to prevent overheating or damage.
10. Service by Professionals Only – Repairs should be performed by qualified technicians using Yardcore approved parts.
11. Do Not Modify – Do not open, alter, or repair the battery pack unless instructed in this manual.
12. Charge in a Safe Area – Do not charge the battery near flammable materials or on combustible surfaces.

### ADDITIONAL SAFETY PRECAUTIONS FOR LEAF BLOWERS

1. Keep All Guards in Place – Never operate the blower without the intake and nozzle guards.
2. Keep Hands and Hair Away – Do not place hands or hair near the air intake during use.
3. Use Only Approved Attachments – Avoid using unapproved nozzles or modified accessories.
4. Never Use Near Open Flames – Keep the blower away from fires or flammable materials.

### BATTERY PACK SAFETY WARNINGS

1. Do Not Dismantle, Crush, or Shred the Battery – Doing so may result in fire, explosion, or chemical exposure.
2. Do Not Expose to Fire, Heat, or Direct Sunlight – Exposure to temperatures above 130°C (265°F) may cause the battery to explode.
3. Avoid Short-Circuiting the Terminals – Keep the battery away from metal objects such as keys, nails, or coins. Shorting may cause burns or a fire.
4. Store Batteries in Original Packaging Until Use – This helps prevent accidental damage or short-circuiting.
5. Avoid Mechanical Shock – Do not drop or strike the battery. Physical damage may lead to dangerous failure.
6. If Battery Fluid Leaks – Avoid contact with skin or eyes. In case of contact, rinse immediately with clean water and seek medical attention.

### CHARGING SAFETY TIPS

1. Always charge the battery on a non-flammable, flat surface in a well-ventilated area.
2. Do not cover the charger or battery during charging.
3. Do not leave the battery unattended while charging.
4. Unplug the charger from the outlet when not in use.
5. If the battery becomes excessively hot, disconnect it immediately and allow it to cool.

### FIRE AND EXPLOSION HAZARDS

1. Keep the tool and battery away from flames, sparks, and flammable surfaces.
2. Do not incinerate the battery pack, even if it is severely damaged or completely worn out.
3. If the battery emits smoke, an unusual odor, or excessive heat, stop using the product immediately and contact Yardcore Support.

### STORAGE AND TRANSPORTATION

1. Store the tool and battery in a cool, dry place away from direct sunlight, heat sources, or moisture.
2. Do not transport the battery where the terminals may contact metal objects. Use original packaging or a protective cover to prevent short circuits.
3. Remove the battery from the tool when not in use or during long-term storage.

### EMERGENCY RESPONSE INSTRUCTIONS

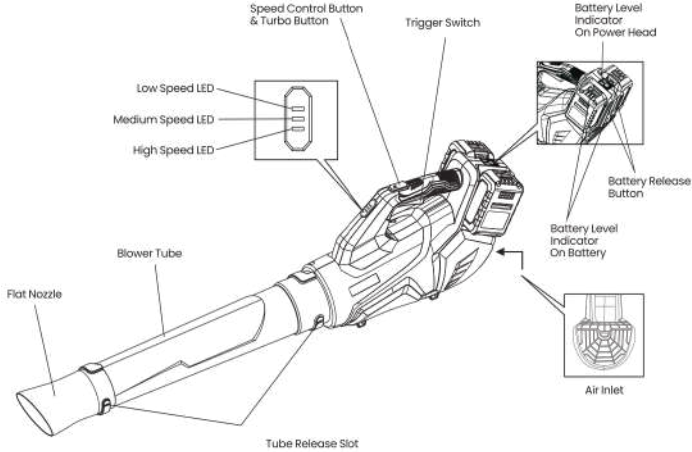
1. In case of fire, use a Class D fire extinguisher (recommended for lithium-ion batteries).
2. Do not use water to extinguish battery fires.
3. If battery fluid contacts skin or eyes, rinse immediately with clean water and seek medical attention.
4. If you feel dizzy, nauseous, or experience irritation after exposure to battery fumes, move to fresh air and contact a healthcare provider.

### ENVIRONMENTAL SAFETY

1. Dispose of this product, battery, and packaging in accordance with local regulations.
2. Do not dispose of batteries in household waste or throw them in the trash. When they reach the end of life, recycle through Call2Recycle® at 1-800-822-8837 or visit [call2recycle.org](http://call2recycle.org).
3. Help reduce environmental impact by recycling whenever possible.
4. Yardcore is committed to sustainability. Please recycle responsibly.

# KNOW YOUR TOOL

## PART LIST & FUNCTION



### LOW SPEED LED

Indicates low power mode for light-duty use or battery-saving. Press speed control button once.

### MEDIUM SPEED LED

Indicates medium power for general use. Press the speed control button twice.

### HIGH SPEED LED

Indicates full power for heavy-duty tasks. Press the speed control button three times.

### SPEED CONTROL BUTTON

Cycles between low, medium, and high speed settings to match your blowing needs.

### TURBO BUTTON

Boosts airflow for stubborn debris. Hold the trigger & press turbo button to activate turbo mode for 10 seconds.

### TRIGGER SWITCH

Starts and stops the blower instantly.

### TUBE RELEASE SLOT

Releases the blower tube Or Flat nozzle for easy removal or attachment.

### BLOWER TUBE

Main airflow channel. Directs high-speed air output from the motor.

### FLAT NOZZLE

Narrows airflow for concentrated blowing power.

### AIR INLET

Intake opening that pulls in air to power the blower.

### BATTERY LEVEL INDICATOR

LED display that shows the current charge level of the battery. One on power head and the other on batteries.

### BATTERY RELEASE BUTTON

Press to remove the battery from the tool for charging or storage.

## INSIDE THE BOX

Accessories included vary by model – use the chart below to confirm what's in your box.

PARTS ↓	MODEL →	YC- LB40120-2B	YC- LB40120-NB
	20 V BATTERIES YC-MSB-204		2
POWER HEAD		1	1
BLOWER TUBE		1	1
FLAT NOZZLE		1	1
CHARGER YC-DCS-12020		1	NA

Only use the appropriate accessories intended for this tool. Accessory information can be found on the product packaging, or at our website [www.yardcoretools.com](http://www.yardcoretools.com)

## ASSEMBLY & SETUP

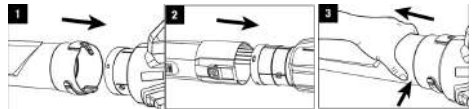
### ASSEMBLING THE BLOWER TUBE



**WARNING:** To prevent accidental starting that could cause serious personal injury, always remove the battery pack from the blower before assembling or disassembling any parts.

Follow the steps below to install or remove the blower tube:

1. Remove the battery pack from the blower.
2. Align the groove in the blower tube with the guide rib on the blower housing.
3. Push the tube onto the blower housing until the latch snaps securely into place (Fig. 1 & 2).
4. To remove the tube, press and hold the tube-release button, then pull the tube straight off the blower (Fig. 3).



**NOTICE:** If the tube feels stiff during installation, a light twist while pushing may help seat it fully. Never force the tube into place.

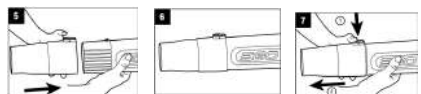
### ASSEMBLING THE FLAT NOZZLE



**WARNING:** Always remove the battery pack before attaching or removing accessories to avoid accidental starting and potential injury.

1. Remove the battery.
2. Align the groove in the tapered nozzle with the guide tab on the blower tube.
3. Push the nozzle onto the tube until it clicks and locks into place (Fig. 5 & 6).
4. To remove the nozzle, press and hold the release button to disengage the latch, then pull the nozzle straight off the blower (Fig. 7).

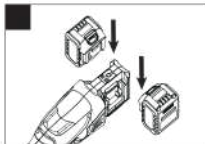
Follow the same sequence to assemble or remove the flat nozzle.



**NOTICE:** You may gently twist the nozzle while installing or removing it to help align the latch mechanism.

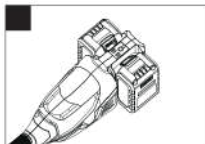
**⚠ WARNING:**  
**ATTACHING/DETACHING MULTI SHARE BATTERY**  
**Do not attach battery until assembly is complete.**  
**NOTICE: Fully charge the battery pack before first use.**

**To Attach**  
 Align the battery ribs with the mounting slots in the machine's battery port and slide the battery pack until it snaps into position (Fig. 7a).



**To Detach**

- Press the battery release button, and the battery pack will disengage from the latch (Fig. 7b).
- Grasp the battery pack and remove it from the machine.



**⚠ WARNING:** Always be aware of the location of your feet, children, or pets when pressing the battery release button. Serious injury could result if the battery pack falls. NEVER remove the battery pack from a high location.

### BUYING A MULTI SHARE BATTERY OR CHARGER

If your product did not include a battery or charger (e.g., YC-BC4013-NB box), you will need:

- Battery Model: Yardcore YC-MSB-204 (20V 4.0Ah)
- Charger Model: Yardcore YC-DSC-12020 (Dual Slot)  
 Yardcore YC-SSC-12020 (Single Slot)

All usage, charging, and safety instructions are included in this manual.

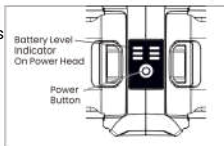
Replacement batteries and chargers are available at [yardcoretools.com](http://yardcoretools.com) or authorized retailers.

# OPERATION (INCLUDING AIRFLOW & NOZZLES)

**⚠ WARNING:** Always wear protective eyewear and hearing protection when operating the blower. Keep bystanders, children, and pets at least 50 ft. (15 m) away.

### TURNING ON/OFF THE MACHINE (FIG. 8)

- Press the power button once to switch on the machine.
- The indicator light will illuminate when the tool is ready for operation.



**TO TURN OFF:**

- Press and hold the power button for 3 seconds to turn off manually.

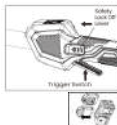
**AUTO POWER-OFF:**

- If the machine is idle for 1 minute, it will automatically power off to save energy.

### TO START THE MACHINE (FIG. 9)

- Push the safety lock-off lever forward.
- While holding the lever forward, press the trigger switch to start the motor.
- Once the motor is running, you may release the safety lock while continuing to hold the trigger.

**NOTICE: The motor starts only when the safety lock-off lever is moved forward and the trigger switch is pressed at the same time.**



### TO STOP THE MACHINE

Release the trigger. The blower will stop immediately.

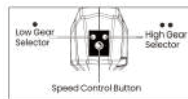
**⚠ WARNING:** Always remove the battery pack from the machine during work breaks and after finishing work.

### CHANGING SPEED MODE (FIG. 10)

This machine features two speed modes, which can be toggled using the speed control button.

- Press the speed control button to cycle between speed modes.
- The speed indicator lights will show the current mode:
  - One light = Low speed
  - Two lights = High speed

Low Speed Mode provides better control and longer operating time per charge. High Speed Mode delivers more cutting power for tougher tasks.



**NOTICE:** Speed can only be changed when the trigger switch is released. The machine will retain your last selected speed mode when restarted.

### ADJUSTING AIR VELOCITY & USING TURBO BOOST

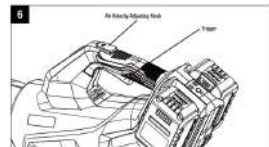
Your blower features stepless speed regulation and a Boost button for maximum control and performance.

**To Adjust the Air Velocity:**

- Turn the air velocity adjustment knob:
  - Clockwise to increase airspeed.
  - Counterclockwise to reduce airspeed.
- You can make adjustments while the blower is running.

**To Use the Boost Button:**

- Press and hold the Boost button to temporarily increase airspeed to the maximum power level.
- Release the button to return to the previously selected speed.



### OPERATING THE BLOWER

- To keep from scattering debris, blow around the outer edges of a debris pile. Never blow directly into the center of a pile.
- To reduce sound levels, limit the number of pieces of power equipment used at any one time.
- Use rakes and brooms to loosen debris before blowing. In dusty conditions, slightly dampen surfaces if water is available.
- Conserve water by using power blowers instead of hoses for many lawn and garden applications, including areas such as gutters, screens, patios, grills, porches, and gardens.
- Watch out for children, pets, open windows, or freshly washed cars, and blow debris safely away.
- After using blowers or other equipment, clean up! Dispose of debris properly.

### TIPS FOR BEST LEAF BLOWER RESULTS

- Always hold the Leaf blower on your right side with both hands.
- Maintain a firm grip on the handle and trigger.
- Keep your balance on both feet.
- Position yourself so you're not pushed off balance by strong airflow.
- Inspect and clear the area of objects like glass, rocks, sharp debris, or metal — these may be blown and cause injury.
- Never use the blower near open flames, hot surfaces, or flammable materials.
- Do not continue use if the blower is making unusual sounds or vibrations.
- If any damage is found, do not use the blower.
- Blow from left to right, using a steady, controlled motion.
- Use only the Yardcore™ nozzle and accessories.
- Using other brands may cause serious personal injury. (Available at [yardcoretools.com](http://yardcoretools.com))

## MAINTENANCE SCHEDULE

COMPONENTS	WHAT TO CHECK	RECOMMENDED SCHEDULE	HELPFUL NOTES
Battery Pack	Cracks, swelling, leaks, overheating	Before each use	Stop using and contact Yardcore Support if anything seems off.
Battery Terminals	Dirt, corrosion, or bent contacts	Weekly or every 5 uses	Wipe gently with a dry cloth. No liquids or metal tools.
Battery Charge Level	Charge condition before and after use	Before & after each use	Avoid long-term storage at 0% or 100% charge.
Battery Storage	Kept in a cool, dry, battery-safe location	Ongoing	Store at ~50% charge if not using for more than a month.
Charger & Cable	Frayed cord, heat marks, bent plug	Monthly	Replace if damaged. Unplug when not in use.
Charging Ports	Dust or debris in charging slots	Monthly	Use a soft brush or cloth to clean.
Motor Housing & Vents	Grass, dust, or buildup blocking airflow	After each use	Wipe with a dry cloth. Keep vents clear.
Trigger & Handle Area	Sticky trigger, slow response	Weekly	Clean gently. If sticky, contact service.
Speed Selector	Both speed modes functioning normally	Weekly	Check while unloaded.
Speed/Lock-On Dial	Smooth operation, no sticking	Weekly	Check when tool is powered off.
Fan Blade (Internal)	Unusual noise, poor airflow	Monthly	Contact service if damage is suspected. Do not open housing.
Blower Tube	Cracks, loose fit, or damage	Monthly	Inspect for wear. Replace if damaged or cracked.
Screws & Bolts	Loose or missing fasteners	Monthly	Tighten gently. Do not overtighten.
Noise/Vibration	Excessive shaking or loudness	While operating	Could indicate spool imbalance or loose part.
Tool Storage Area	Dry, clean, temperature-controlled space	Ongoing	Avoid direct sunlight or extreme temperatures.
Plastic Surfaces	Dirt, sap, or stuck debris	After each use	Wipe with soft dry cloth. Avoid water or harsh cleaners.
Ventilation Slots	Clogged or dusty	Weekly	Clean with brush or vacuum.
General Inspection	Any signs of wear, damage, or missing parts	Monthly	Quick visual check can help catch issues early.

**NOTICE:** For best results, follow this schedule regularly. Refer to the full manual for safety precautions and service instructions.

## TECHNICAL SPECIFICATIONS

	YC-LB40120-2B	YCLB40120-NB
<b>RATED VOLTAGE</b>	40 V MAX (2x20V)**	
<b>RATED POWER</b>	600 W	
<b>NO LOAD SPEED /MIN</b>	+ Turbo: 23,000/min High Speed: 18,000 Medium Speed: 15,000 Low Speed: 10,000	
<b>AIR VOLUME CFM</b>	+ Turbo: 560 CFM High Speed: 400 Medium Speed: 365 Low Speed: 260	
<b>AIR SPEED MPH</b>	+ Turbo: 120 MPH High Speed: 90 Medium Speed: 80 Low Speed: 50	
<b>BATTERY TYPE</b>	Lithium Ion	NA
<b>BATTERY MODEL</b>	YC-MSB-204	NA
<b>CHARGER MODEL</b>	YC-DSC-12020 (Dual Slot Charger)	NA
<b>CHARGER RATING</b>	Input: 120V~ 2.0A max Output: 2 x 40W	NA
<b>TOOL WEIGHT</b>	6.83 Lbs 3.10 Kgs	4.18 Lbs 1.90 Kgs
<b>TOOL DIMENSIONS LxWxH</b>	890x160x255 mm 35.0x6.29x10.0"	FULLY ASSEMBLED (With Blower Tube)

\*\*Voltage measured without workload. Initial battery voltage reaches maximum of 20 volts. Nominal voltage is 18 volts.

### \*BATTERY LEVEL INDICATOR On Battery On Power Head

<b>LED ON BATTERY</b>																
<b>% OF CHARGE</b>	0 to 25   25 to 50   50 to 75   75 to 100															
<b>RUN TIME</b>	<table border="1"> <tr> <td><b>LOW SPEED</b></td> <td>&lt;6 mins</td> <td>60</td> <td>65</td> <td>100</td> </tr> <tr> <td><b>MEDIUM SPEED</b></td> <td>&lt;5 mins</td> <td>20</td> <td>25</td> <td>35</td> </tr> <tr> <td><b>WITH LOAD HIGH SPEED</b></td> <td>&lt;4 mins</td> <td>12</td> <td>14</td> <td>20</td> </tr> </table>	<b>LOW SPEED</b>	<6 mins	60	65	100	<b>MEDIUM SPEED</b>	<5 mins	20	25	35	<b>WITH LOAD HIGH SPEED</b>	<4 mins	12	14	20
<b>LOW SPEED</b>	<6 mins	60	65	100												
<b>MEDIUM SPEED</b>	<5 mins	20	25	35												
<b>WITH LOAD HIGH SPEED</b>	<4 mins	12	14	20												
<b>+ TURBO</b>	Hold press = Turbo for 10 seconds															
<b>BATTERY IMPLICATIONS</b>	<table border="1"> <tr> <td>Charge the battery</td> <td>Ideal for long term storage</td> </tr> </table>	Charge the battery	Ideal for long term storage													
Charge the battery	Ideal for long term storage															
<b>LED ON POWER HEAD</b>	<table border="1"> <tr> <td></td> <td>GREEN</td> </tr> <tr> <td></td> <td>YELLOW</td> </tr> <tr> <td></td> <td>RED</td> </tr> </table>		GREEN		YELLOW		RED									
	GREEN															
	YELLOW															
	RED															

\*Times shown are estimates. Actual performance may vary with conditions and usage.

## CHARGER LED INDICATOR

GREEN LED*			RED LED	
●Solid	●Flashing		●Solid	●Flashing
Without Battery	With Battery	Battery Is Charging	Charging Error**	Battery Error Detected
No Battery Detected	100% Charge	Wait for battery to finish charging	Read Trouble shooting Page	Unplug charger & battery

\*YC-DSC-12020 has 2 Battery Slots with 2 LED lights each  
YC-SSC-12020 has 1 Battery Slot with 2 LED lights

\*\* If charging takes unusually long time, the charger stops and shows a solid red light. Only use Multishare Yardcore 20V 4 Ah Batteries

## CHARGING TIME

Charger Model	Battery Slots	Charging 1 Battery*	Charging 2 Batteries*
YC-DSC-12020 <small>(Dual Slot Charger)</small>	2	140 mins	140 minutes <small>(charges both simultaneously)</small>
YC-SSC-12020 <small>(Single Slot Charger)</small>	1	140 mins	NA

\*Charging times based on Yardcore MultiShare 20V 4.0Ah battery packs under standard conditions. Actual times may vary depending on battery age, temperature & usage.

## MULTI SHARE BATTERY COMPATIBILITY YC-MSB-204 20V 4 Ah Lithium

*TOOLS COMPATIBLE**		CHARGING	
20V Series 2x20V 40V Max	CORDLESS BRUSH CUTTER	YC-BC4013	SINGLE SLOT CHARGER
	CORDLESS CHAINSAW	YC-CS4016	YC-SSC-12020
	CORDLESS LEAF BLOWER	YC-LB40120	DUAL SLOT CHARGER
			YC-DSC-12020

\*Yardcore is continuously expanding its battery platform. Please visit [www.yardcoretools.com](http://www.yardcoretools.com) for the most up-to-date compatibility list.

\*\*Some tools include batteries and chargers, while others are sold separately. Always check product details before purchasing.

## STORAGE

### TOOL STORAGE

- Always remove the battery pack from the Leaf blower after use.
- Clean the blower thoroughly to remove any dust or debris before storing.
- Store the blower indoors in a dry, well-ventilated area away from moisture, direct sunlight, extreme heat, and mechanical damage.
- Keep out of reach of children.

### ACCESSORIES STORAGE

- Store all loose parts, accessories, and blower attachments in a clean, dry location. Use the included tool kit or a designated storage box to keep small components like nozzles, extension tubes, and wrenches organized and protected. Clean the blower thoroughly to remove any dust or debris before storing.
- Keep all parts together to avoid misplacement and ensure safe, quick reassembly when needed.

### BATTERY STORAGE

- Remove the battery from the tool and store it separately.
- Store the battery at approximately 50-75% charge (3 bars on the Battery Level Indicator on Battery).
- Do not store the battery fully charged or completely discharged for extended periods.
- Store in a cool, dry place away from direct sunlight, extreme temperatures, and flammable materials.
- If storing for more than 3 months, check and recharge the battery every 3 to 6 months.

### CHARGER STORAGE

- Unplug the charger from the wall outlet when not in use.
- Store the charger in a clean, dry area away from moisture and dust.
- Avoid storing the charger in temperatures below 0°C (32°F) or above 40°C (104°F).
- Do not coil the power cord tightly during storage.

# TROUBLE SHOOTING

The table below lists common issues and simple actions you can try if your Yardcore Leaf Blower isn't working as expected. If these steps don't solve the problem, please contact Yardcore Customer Support or visit an authorized service center.

**⚠ WARNING:** Always switch off the tool and remove the battery before performing any checks or maintenance.

Problems	Possible Causes	Corrective Action
<b>Tool does not start</b>	Battery not inserted properly	Remove and reinstall the battery securely.
	Battery not charged	Fully recharge the battery.
	Battery contacts are dirty	Clean contacts with a dry cloth.
	Battery is too hot or too cold	Allow battery to return to room temperature.
	On/off switch not functioning	Contact Yardcore Service Center.
<b>Tool runs intermittently</b>	Battery connection is loose	Remove and reinstall battery.
	Internal wiring issue	Contact Yardcore Service Center.
<b>Low air speed or performance</b>	Air intake is blocked by debris	Remove the battery and clear any debris from the intake area.
	Motor fan is worn or damaged	Contact Yardcore Service Center for inspection and repair.
<b>Unusual noise or vibration</b>	Debris caught in fan or motor	Remove battery and inspect fan area. Clean carefully.
	Fan is loose or damaged	Discontinue use and contact service center.
<b>Tool does not charge</b>	Charger not plugged in properly	Check connection and socket.
	Battery too hot or too cold	Allow battery to sit at room temperature.
	Battery or charger defective	Try an alternate battery or charger.
	Power source not working	Try a different outlet.
<b>Battery charge indicator does not light</b>	Battery not seated on charger correctly	Remove and reinsert battery on the charger.
	Charger or battery damaged	Replace as needed. Contact Yardcore Support.
<b>Motor overheats or shuts off</b>	Tool used continuously under heavy load	Let the tool cool down before restarting.
	Blocked air vents	Clean the air vents.

# ENVIRONMENTAL NOTE

Yardcore is committed to protecting the environment and reducing unnecessary waste. Please dispose of packaging, batteries, and worn-out tools responsibly.

1. Packaging Materials – Recycle cardboard, plastics, and inserts according to your local recycling guidelines.
2. Batteries – Do not discard batteries in the trash. When they reach end of life, recycle through Call2Recycle® at 1-800-822-8837 or visit [call2recycle.org](http://call2recycle.org).
3. Tool Disposal – When your tool reaches the end of its life, dispose of it at an official e-waste facility or recycling program.

For more information, visit [www.yardcoretools.com/recycle](http://www.yardcoretools.com/recycle)

## WARRANTY INFORMATION

Thank you for choosing Yardcore™. We're committed to delivering high-quality outdoor tools built to perform reliably – season after season – while giving back to the planet.

### LIMITED WARRANTY – 2+1 YEARS

Yardcore™ warrants that the tool, battery, and charger, if included with this product, are free from defects in materials and workmanship under normal residential use for a period of **2 years** from the original date of purchase.

When you register your product within **30 days**, Yardcore™ will extend your warranty by 1 additional year, for a total of **3 years** of limited coverage. If a covered defect arises during the warranty period, Yardcore™ will, at its sole discretion, provide one of the following remedies:

- A refund of the original purchase price
- Repair instructions or troubleshooting support
- A replacement, if feasible, through Amazon's platform
- Only one warranty claim is permitted per product.

### WHAT'S COVERED

This 2+1-year limited warranty applies to:

- Yardcore™ tools
- Yardcore™ lithium-ion batteries
- Yardcore™ battery chargers

### WHAT'S NOT COVERED

This warranty does not cover:

- Normal wear and tear (e.g., scratches, fading, cosmetic wear)
- Damage from misuse, abuse, or neglect
- Commercial or rental use
- Use of non-Yardcore™ accessories or parts
- Damage due to unauthorized repairs or modifications
- Failure to follow the operator's manual instructions

### HOW TO OBTAIN WARRANTY SERVICE

All Yardcore™ products are sold exclusively through authorized retailers.

If purchased on Amazon:

Warranty service for Amazon orders is handled directly through Amazon's return and messaging system for fast support.

To request warranty assistance:

1. Stop using the product immediately.
2. Log in to your Amazon account and locate your Yardcore™ order.
3. Click "Contact Seller" or "Return/Replace Item."
4. Provide:
5. Your Amazon Order ID
6. A description of the issue
7. Photos or video (if applicable)

If purchased from [yardcoretools.com](http://yardcoretools.com) or another authorized dealer:

Visit [www.yardcoretools.com/warranty](http://www.yardcoretools.com/warranty) for the latest warranty claim instructions and contact details.

**NOTICE:** Warranty support is only available for items purchased from authorized sellers.

### LIMITATION OF LIABILITY

To the extent permitted by law, Yardcore™ shall not be liable for incidental or consequential damages resulting from the use or inability to use this product. This Limited Warranty gives you specific legal rights, and you may also have other rights, which vary from state to state.

### NON-TRANSFERABLE WARRANTY

This warranty is valid only for the original purchaser and is non-transferable. Proof of purchase is required for all claims.

### PROOF OF PURCHASE REQUIRED

A valid proof of purchase, such as an original receipt, invoice, or Amazon order confirmation, is required for all warranty claims.

### PRODUCT REGISTRATION

Register your Yardcore™ product for:

- Faster warranty support
- Safety alerts & recall notices
- Exclusive offers and tool tips
- Early access to new products

To activate your full 3-year limited warranty, please register your product within **30 days** of purchase.

### REGISTER NOW

Scan the QR code or visit:  
[register.yardcoretools.com](http://register.yardcoretools.com)



Scan QR CODE for Product Registration and activate the +1 Year extended warranty

### YOUR PRIVACY

We'll use your email and phone number (if provided) only for:

- Warranty & product support
- Yardcore™ updates and promotions (with your consent)

**NOTICE:** Registration is optional but helps us serve you better – and is required to unlock your 3rd year of coverage.

### WARRANTY VOID CONDITIONS

Your Yardcore™ warranty will be considered void if:

- Used for commercial or rental purposes
- Modified or repaired by unauthorized persons
- Stored improperly or exposed to extreme conditions
- Used outside its intended purpose or design
- False or misleading information is provided in a warranty claim

### LEGAL DISCLAIMER

Yardcore™ reserves the right to update product specifications, features, designs, and packaging details at any time, without prior notice, to reflect ongoing improvements or regional requirements. For the latest product updates, manuals, and warranty terms, please visit: [www.yardcoretools.com](http://www.yardcoretools.com)

## CONTACT INFORMATION

Please contact us for any information or support needs.

### HEADQUARTERS

ZHEJIANG J SHINE IMP & EXP CO., LTD.  
Address: No. 27 Wujiang Avenue, Shentang Industrial Zone, Jinhua City, Zhejiang Province, China

### MANUFACTURING FACILITY & OFFICE

ZHEJIANG WELLSHINE INDUSTRY & TRADE CO., LTD.  
Shentang Industrial Zone, Baiyang Street, Wuyi, Jinhua, Zhejiang, China

### CONTACT INFO

EMAIL – SALES@YARDCORETOOLS.COM

EMAIL – SUPPORT@YARDCORETOOLS.COM

### SOCIAL MEDIA HANDLES

FACEBOOK – @YARDCORETOOLS  
LINKEDIN – @YARDCORETOOLS  
INSTAGRAM – @YARDCORETOOLS  
YOUTUBE – @YARDCORETOOLS

### WEBSITE

[WWW.YARDCORETOOLS.COM](http://WWW.YARDCORETOOLS.COM)  
[WWW.YARDCORE.US](http://WWW.YARDCORE.US)

### BUYING ON AMAZON

Search: "YardcoreTools" on Amazon

*Yardcore reserves the right to update product information, specifications, and packaging details as needed based on ongoing improvements or regional requirements. For the latest product updates, support documents, and warranty terms, please visit our official website. [www.yardcoretools.com](http://www.yardcoretools.com)*

## THANK YOU

---

### 1 TOOL = 1 TREE PLANTED



*For every Yardcore tool sold, we give back by planting a tree through our partnership with One Tree Planted. Learn more about our sustainability efforts at: [www.yardcoretools.com/sustainability](http://www.yardcoretools.com/sustainability)*

### YARDCORE MISSION

*To provide durable, eco-conscious gardening tools and expert knowledge, enabling families to grow with confidence, care for the environment, and create gardens where they can connect and flourish.*

### YARDCORE PURPOSE

*We are driven to create eco-conscious gardening tools that empower families to build gardens they can be proud of, fostering moments of connection while protecting the planet.*

### YARDCORE VISION

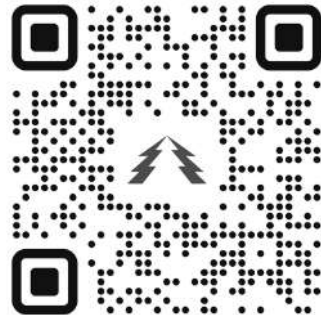
*To inspire and support families in creating sustainable, thriving gardens that bring joy, nurture the earth, and cultivate lifelong memories.*

# THANK YOU FOR CHOOSING YARDCORE

We're proud to support your yardwork with reliable, battery-powered tools.

Your support fuels our mission to build tools that are better for people, and better for the planet.

**REGISTER  
YOUR  
YARDCORE  
TOOL**



Scan The QR Code Or Visit: [register.yardcoretools.com](http://register.yardcoretools.com)



**YARDCORE®**  
**TOOLS BUILT FOR NATURE**